

INTERNET ARCHIVE <http://intarch.ac.uk/antiquity/mackie02figure2.html> Go

WayBackMachine 7 captures 19 Jan 03 - 19 Jan 05

OCT JAN FEB Close
2003 19 2005 2006 Help

Mackie [ANTIQUITY 76: 293](#) Figure 2.

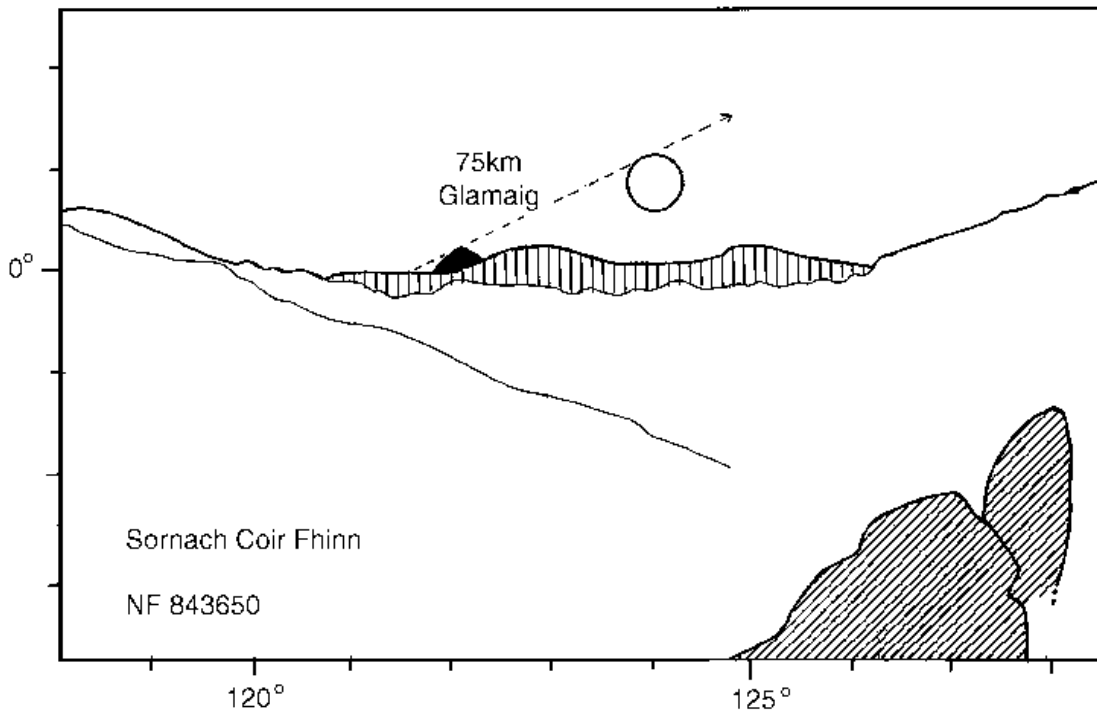


FIGURE 2. South-east horizon profile seen from Sornach Coir Fhinn stone circle in North Uist, illustrating how the distant Glamaig on Skye marks sunrise on the first and last Quarter Days. The profile must be considered a provisional one, no theodolite or GPS being available when I visited the site. The landscape is drawn from a colour transparency taken from the approximate centre of the circle (one of its stones, and an outlier, being visible at lower right). The azimuths and altitudes are computed from the Ordnance Survey maps and the Sun at the rising position shown has a declination of about 16.7° .



© Antiquity Publications Ltd 2002